

2023  
PRIMARY PARENT  
HANDBOOK  
**PK-6**

## Lake Joondalup Baptist College

Kennedy Drive Joondalup Western Australia 6027 PO Box 95 Joondalup Western Australia 6919

phone +61 8 9300 7444 | [ljbc@ljbc.wa.edu.au](mailto:ljbc@ljbc.wa.edu.au) | [www.ljbc.wa.edu.au](http://www.ljbc.wa.edu.au)

Commonwealth Register of Institutions and Courses for Overseas Students (CRICOS) Provider Code 01529C

## College Contacts

Location: Kennedya Drive Western Australia 6027  
Postal Address: PO Box 95 Joondalup WA 6919  
Telephone Secondary: (08) 9300 7444  
Telephone Primary: (08) 9300 7435  
Facsimile: (08) 9300 1878  
Email: [ljbc@ljbc.wa.edu.au](mailto:ljbc@ljbc.wa.edu.au)  
Website: [www.ljbc.wa.edu.au](http://www.ljbc.wa.edu.au)  
Office Hours: Monday to Friday 8am – 4pm  
Uniform Shop: Tuesday 8 to 11.30am and 12.30 to 4pm.  
Thursday 8 to 11.30am and 12.30 to 4pm.  
CRICOS: 01529C

## Term Dates 2023

### Term 1

Monday 30 January – Thursday 6 April

#### **Mid term break**

Friday 3 March – Monday 6 March (Labour Day)

### Term 2

Thursday 27 April – Friday 30 June

#### **Mid term break**

Friday 2 June – Monday 5 June (Western Australia Day)

### Term 3

Tuesday 18 July – Friday 22 September

#### **Mid term break**

Friday 18 August – Monday 21 August

### Term 4

Tuesday 10 October – Friday 8 December

## Our School Day 2023

### Pre Primary – Year 6

Monday to Friday

8.35am – 3.00pm

Recess: 10.25 – 10.45am

Lunch Play. 12.25pm – 12.50pm

Lunch Eating: 12.50 – 1.00pm

### Kindergarten

8.30am – 2.45pm

### Pre Kindergarten

Fridays only

PK 1 (Possums) 8.30 – 10.30am

PK 2 (Puggles) 11.00am – 1.00pm

## Primary Leadership

COLLEGE PRINCIPAL PK - 12

### **Mr Paul Sonneman-Smith**

[Paul.Sonneman-Smith@ljbc.wa.edu.au](mailto:Paul.Sonneman-Smith@ljbc.wa.edu.au)

DEAN OF PRIMARY PK - 6

### **Mrs Carol Harris**

[Carol.Harris@ljbc.wa.edu.au](mailto:Carol.Harris@ljbc.wa.edu.au)

*Please note that class teachers should generally be the first point of contact, unless stated otherwise in policies and procedures.*



## College Mission

The Lake Joondalup Baptist College Primary School is a community which seeks to ensure that children have the best opportunities to achieve their academic, artistic, cultural, emotional, physical, social and spiritual potential. The Primary School, by working within a Christian framework, aims to achieve this through the provision of a caring and educationally stimulating environment.

## College Motto

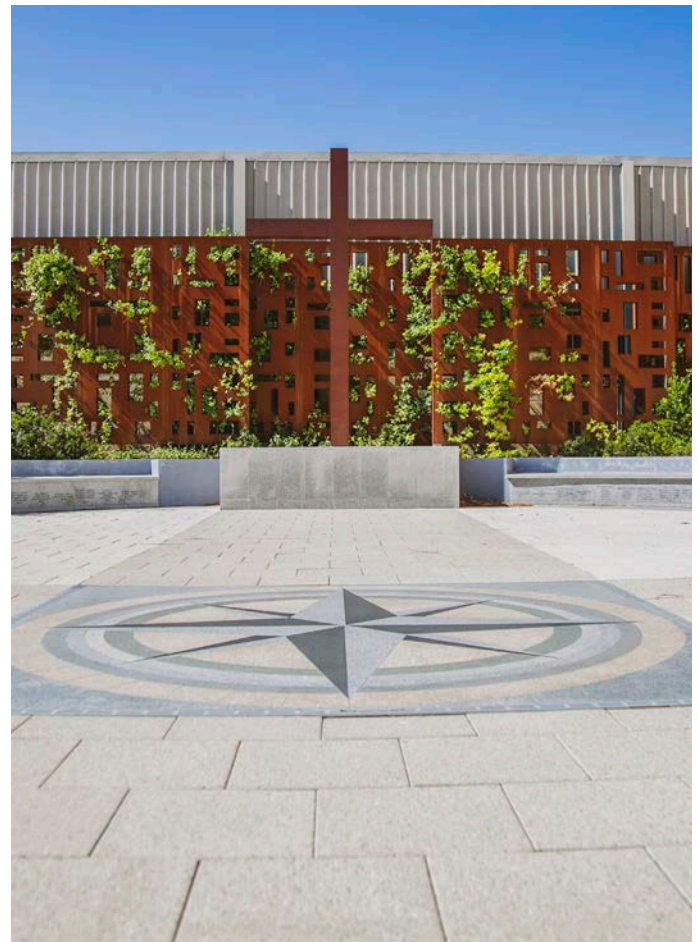
Our motto, ***Seek Wisdom, Act Justly, Love Mercy, Walk Humbly*** encapsulates our desire to provide a high standard of education and encourage a strong social conscience within a Christian context.

## College Christian Environment

The Primary School is an integral part of Lake Joondalup Baptist College, which is a ministry of the Lake Joondalup Baptist Church. The College is founded on Christian principles which underpin the framework of all programs.

Students entering the College (at Primary or Secondary level) are not required to have a commitment to the Christian faith. However, all students must participate fully in the College's Christian Education program.

Primary students engage in Christian Education lessons each week. These emphasise basic Christian truths and their application to daily life. Each morning, a brief class devotion begins the day, including a Bible reading and prayer, and Worship Assemblies are held regularly. A strong Pastoral Care program operates throughout the Primary School.



## The Primary Handbook

The Primary School caters for students from Pre Kindergarten to Year 6. There are approximately 550 students in the Primary School. From Year 7, students transition to our Secondary School, which is situated on the same campus.

Our Primary Students are valued as curious, capable and collaborative learners with their uniqueness celebrated. In a safe, inclusive and rich learning environment we seek to help our students discover their God-given talents and reach their full potential. LJBC Primary students are encouraged to develop resilience and a sense of personal responsibility, whilst being nurtured in a supportive environment. We aim to impart in our students a strong sense of community and fairness, a joyful passion for learning and a desire for excellence.

Our Primary School is comprised of dedicated and professional Christian educators who are committed to partnering with our families to create a positive learning environment for all students. It provides a firm, solid foundation for students as they start their exciting learning journey at Lake Joondalup Baptist College.

***Seek Wisdom  
Act Justly  
Love Mercy  
Walk Humbly***

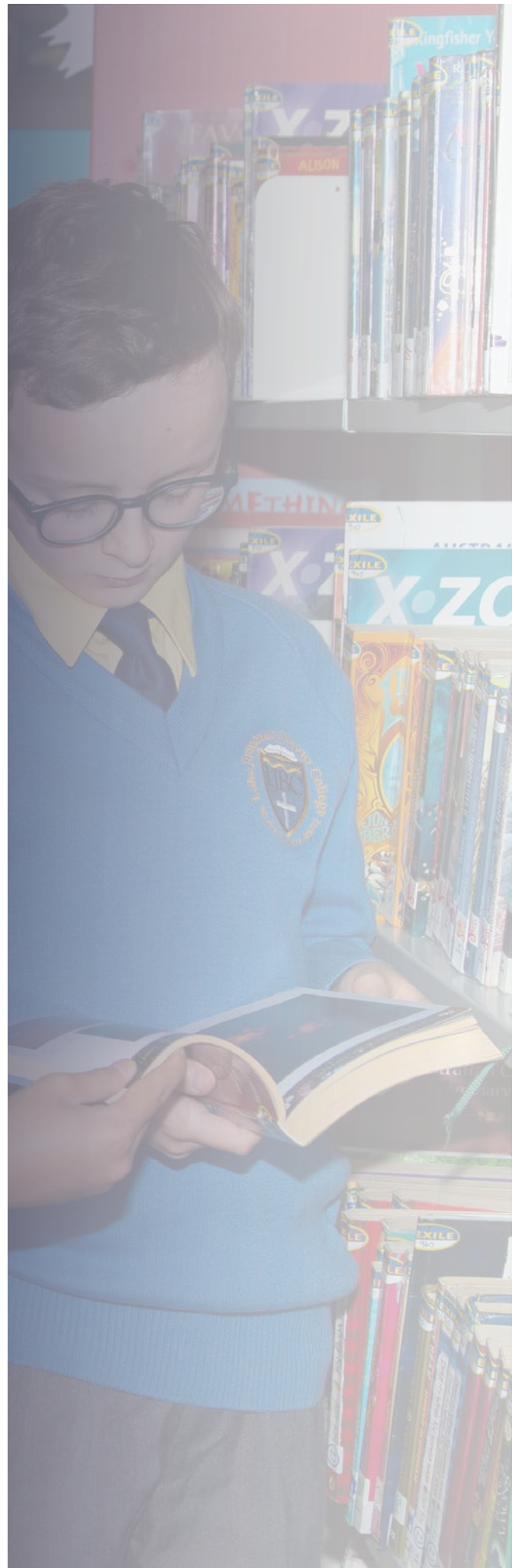


## Contents

College Contacts	2
College Mission	3
College Motto	3
College Christian Environment	3
Primary School Facilities	6
Before and after School Procedures	7
Arrival Procedures - Early Years	7
Attendance Early Years	7
Absences	8
Children leaving School Grounds	8
Late Notes	8
Sickness and Accidents	8
Administration of Medication	8
Custody Arrangements	8
Parent/Guardian Communication	9
Parent/Guardian School Contact	9
Parent/Teacher Meetings	9
Assemblies	10
Parents Involvement	10
Primary Parents & Friends (P&F)	10
Parent Participation Program	10
Compliments and Complaints	11
Special Events	11
Parking/Transport	11
Money Collection	11
Excursions	11
Students Book Lists	11
Student Stationery Requirements	11
Food at School	12
Canteen Lunch Orders	12
Birthdays	12
Lost Property	12
Uniform	13
Sun Protection	13
Dental Therapy Centre	13
Graffiti and vandalism	14
Games and electronic equipment	14
Mobile Phones	14
Houses	14
Substance Abuse Policy	15
Learning Technology	15
Learning Enhancement	15
Specialists	15
Co-curricular	15
Camps	15
In Term Swimming Lessons - PP to Y6	16
College Enrolment Procedure	16
Fees	16
Termination your Child/Children's enrolment at LJBC	16
The Early Years - Pre Kindergarten to Year 2	17
Early Years Learning Facilities	17
The Pre Kindergarten Program	18
The Kindergarten Program	18
The Pre Primary Program	18
Year 1 and 2 Program	19

## Contents

Early Assessment and Reporting	19
Year 1 and 2 Homework	19
Speech and Occupational Therapy	19
Community Child Health Nurse	19
Early Years Excursion/Incurtion	19
Days of Instruction - Early Years	20
Child Safety and Parent Rosters- Early Years	20
Collection of Students - Early Years	20
The Primary Years - Years 3, 4, 5 and 6	20
Primary Year 3 and 4	20
Years 3 and 4 Homework	20
Primary Years 5 and 6	20
Year 5 and 6 Homework	21
Assessment and Reporting - Primary Years	21
Primary Student Behaviour	21
College Charter of Goodwill	21
'The LJ Way'	21
Setting Up for Success	22
Primary Safety and Wellbeing	22
Primary School Playground Behaviour	22
Creating a Positive Environment	23
Class Principles for medium and high level Misbehaviour	24
Restorative Process	24
Playground Behaviour	24
Primary Uniform	25
Uniform Policy	25
Pre Kindergarten Uniform	25
Kindergarten/Pre Primary Uniform	25
Year 1 and 2 Uniform	26
Year 3 - 6 Uniform	27
Bags/Shoes	28
Art Shirts	28
Jewellery	28
Bathers	28
Hair	29
Personal Presentation	29
Hats	29
Lost Items	29
Uniform Standards	29
Uniform Practice	29







## GENERAL INFORMATION

### Primary School Facilities

The Primary School is a modern, fully fenced environment. Shared areas include special purpose rooms (Art, Japanese and Music), a well-equipped modern library, excellent computer facilities, a Learning Enhancement Centre, Inclusive Education centre, nature play areas, playgrounds, fields, first aid and Administration Centre. The classrooms are well resourced and air-conditioned. A wireless network, laptop computers, iPads, interactive whiteboards and LED screens, Smart TV's, short throw projectors, data projectors and 3D printers assist with eLearning and teaching.

Three grassed ovals, a secure early learning play area, nature play spaces, basketball courts and a playground area provide recreation areas for the children.

The College Sports Centre provides basketball, volleyball and gym opportunities for the students. College Auditorium is available for assemblies, concert productions and gatherings. The College also takes advantage of the proximity of the facilities at HBF Arena Joondalup, which includes swimming pools, playing fields, basketball and tennis courts. Children riding to and from school are able to leave their bikes in a designated area.





## Before and after School Procedures

Children should not arrive at school before 8.10am in the morning. Arrival at 8.20am allows sufficient time for children to enter classrooms and prepare for the day's activities.

Morning duty staff commence at 8.10am. On arrival children are encouraged to put their bags away and sit outside their classrooms, or go to the Library for book exchange and quiet reading. Classrooms are open at 8.25am.

Children will be supervised outside Primary Reception until 3.20pm. Please advise us if you will be a little late collecting your children. The Primary School Library is available from 3.15 to 4pm on Monday, Wednesday and Thursday and until 3.45pm on Friday for Year 1 to 6 students only. Parents are required to register their children to attend the Library after school.

## Arrival Procedures – Early Years

The ELC (Early Learning Centre) gates will be unlocked at 8.20am each morning, locked at 8.50am then unlocked at 2.30pm for the afternoon pick-up.

Pre Kindergarten, Kindergarten and Pre Primary students should be taken to the classroom by a parent or other nominated adult.

Parents may stay for five to ten minutes with their child. The class teacher will indicate when it is time to start the lesson. Younger siblings should be supervised closely.

One parent/guardian of each Pre Kindergarten student needs to stay with the student during Semester 1. In Semester 2, the Pre Kindergarten students attend school on their own.

## Attendance - Early Years

Pre Primary became the first compulsory year of schooling in WA in 2015. As such, all students are expected to attend regularly. A written explanation from parents must be promptly provided for all absences.

In Pre Kindergarten and Kindergarten, we encourage regular attendance of all children to ensure they are able to participate fully and benefit from the carefully structured developmental programs which are taught. In Pre Kindergarten and Kindergarten, if children are unwell or extremely tired, they should stay home to rest and recover until they are well.



## Absences

Students are required to be punctual and should be present at all lessons unless ill.

Notification via a note, phone call or email to [Primary@ljbc.wa.edu.au](mailto:Primary@ljbc.wa.edu.au) explaining all absences is required promptly. Primary Reception will forward all notices on to the class teacher. A Medical Certificate may be required to explain prolonged repeated patterns of absences.

Parents/guardians or carers should make every effort not to take children on holidays during term time as much programmed work and assessment is missed. Written negotiation with the Dean of Primary needs to occur if a child needs to be absent from school for any period of time.

## Children leaving School

When parents/guardians remove students from school during the day, they must complete a Leaving Authority form and fill in the Sign In/Out Register at Primary Reception. The Leaving Authority form is handed to the teacher when collecting the child.

## Late Notes

It is important that the learning program commences promptly at 8.35am. Parents/guardians are asked to have children in the classroom by this time. Children arriving at school after 8.35am must have a completed Late Note to take to their teacher. Parents/guardians need to accompany their child to Primary Reception to complete the Late Note as well as fill in the Sign In/Out register.

## Sickness and Accidents

In the event of a child being sick or involved in an accident, parents are contacted whenever possible. All parents are asked to make sure that the College has a telephone number and an address at which they can be contacted.

Family Information needs to be kept up to date. Any changes in personal information such as telephone numbers, addresses and the person to contact in an emergency, should be recorded on a Change of Information form and handed in to Primary Reception or emailed to [Primary@ljbc.wa.edu.au](mailto:Primary@ljbc.wa.edu.au) as soon as they occur.

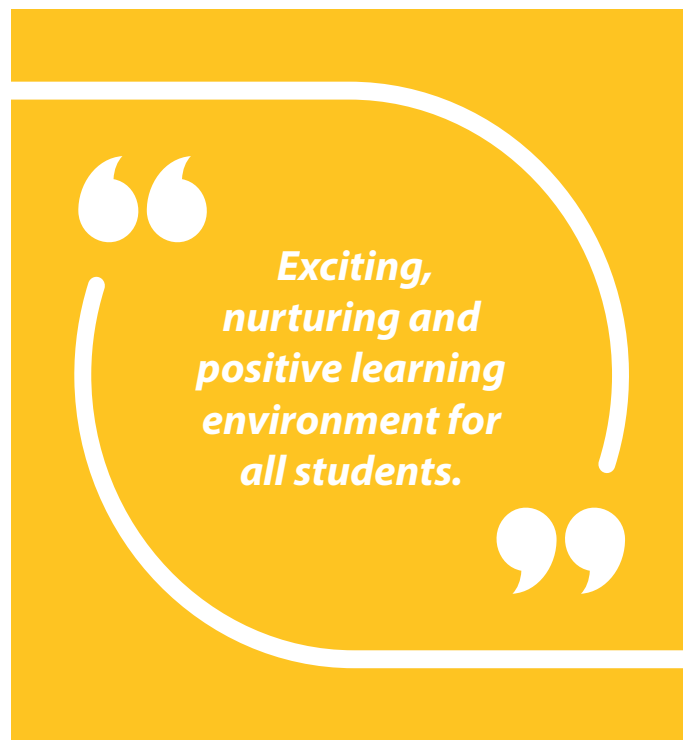
## Administration of Medication

Lake Joondalup Baptist College Primary School will comply with reasonable requests for assistance in the administration of medication where there is an agreement between staff and parents/guardians and where written instructions from the prescribing doctor have been provided for prescribed medications.

All medications, including analgesics, such as Panadol, will be kept centrally and administered under the supervision of the appropriate staff member at Primary First Aid. Analgesics will only be administered with a parent's permission. Children are not to keep medications in their bags, lunch boxes or desks.

## Custody Arrangements

Please let the class teacher and Dean of Primary know of any custody arrangements, or changes in living arrangements, which involve your family. Documentation involving custody arrangements or Parenting Plans will need to be provided to Primary Administration.







## Parent/Guardian Communication

It is our policy to keep parents/guardians as fully informed about school activities as possible.

The College website contains a Calendar of Events which is updated regularly. The Primary Notices are published every week on Fridays via email. The College eNewsletter is published regularly and can be accessed on the College website. Please subscribe on the website to receive emails to inform you when newsletters are available. Newsletters can be accessed on the College website under the 'Our Community' menu tab.

Whilst classroom teachers will endeavour to provide information on school events, parents are also encouraged to check the College Calendar, Primary Notices and eNewsletter to be fully informed.

See the LJBC website for 2023 Term Dates.

All Primary Teachers can be contacted readily via school emails. A communication book is kept in the Kindergarten classrooms, for messages. Please be aware that this is a communal book. If you have private information, please relay it to the teacher via a letter, email or verbally.

Please check your child's Class Teacher Communication emails, SEQTA emails, Homework Journals, Student Diaries, calls and SMS messages. Where possible, communication is best face-to-face. Families are encouraged to use the communication that works best for them.

## Parent/Guardian School Contact

Contact between the home and school is greatly encouraged. Parents/guardians are invited to make an appointment at any time to discuss their child's strengths, weaknesses and interests as well as voice any concerns they may have regarding their child's educational development. A Parent Information Evening for each class will be held early Term 1. Class policies and practices will be outlined. This will be a general information session and not a time to discuss individual children.

Generally, teachers will be unavailable for interviews or discussions before school due to Duty of Care responsibilities and preparation for class, or on Tuesday afternoons, as this is a Staff Meeting day. Urgent communication at this time should be brief.

## Parent/Teacher Meetings

Contact between the home and school is greatly encouraged. Opportunities for parent-school contact and meetings include:

- PK – 6 Parent Information Evening, Term 1, Week 1
- K – 6 Parent Teacher Connect Term 1, Term 2 and as needed
- PK – 6 Learning Journey, Term 3
- K/PP Orientation Evening – Term 4
- K-6 Booklist Drop-off Days – Term 1, shortly before school starts

Parents are welcome to make an appointment with the teacher at any time during the year to discuss aspects of their child's progress as they feel necessary.



## Assemblies

Class Assemblies are held on a Friday morning in the College Auditorium. Assemblies commence at 8.45am and last for approximately 45 minutes. All parents/guardians are welcome and are encouraged to attend when possible. Awards and items will occur early in the Assembly.

Parents/Guardians will be notified of the Class Assembly timetable early in the year and reminders are placed in Primary Notices. Please park at the Arena unless collecting children from Kindergarten or Pre Primary. Only students participate in Worship Assemblies.

## Parent Involvement

The involvement of Parents/Guardians in their child's education is highly valued and we support the development of a close relationship between the home and the School. Help is welcomed both in the School and in their child's class. We welcome parents/guardians at our assemblies and special functions held throughout the year and encourage parents/guardians to be a part of school activities at any available opportunity. Class teachers organise tasks and rosters for help, as well as issue invitations to be present for special class activities.

Parent Helpers and PPP workers must sign in at Primary Reception before proceeding to the activity.

A Working with Children Check is required. This is a State Government requirement and checks of various categories of workers with children are now necessary.

Parents of students involved in unpaid child related work in their child's school meet the criteria for Parent Volunteer Exemption and do not require a WWCC.

All volunteers, including parents, must sign in and sign out at each visit while volunteering and wear the name label supplied.

## Primary Parents and Friends (P&F)

Parents/Guardians of current students are automatically members of the Primary School P&F.

## Parent Participation Program (PPP)

Parental help is of great importance in any school community. At LJBC, participation in the Parent Participation Program is a condition of enrolment. Help is valued in various departments, such as the classrooms, early morning reading programs (RACE and RTL), Canteen, Uniform Shop, Library, and Physical Education at carnivals and other events.

Each family is encouraged to contribute a minimum of 10 hours of voluntary work per year, for the period in which they have a child attending the College from Kindergarten through to Year 11. A description of the tasks and a nomination sheet are circulated to parents, enabling them to contribute in a chosen area of interest or an area of competence. Each family is charged \$200 on their Semester 1 account, which will be credited at a rate of \$20 per hour upon receipt of a timesheet showing hours completed. PPP forms can be collected from and handed in to Primary Reception.



“ The involvement of parents/guardians in their child's education is highly valued and we support the development of a close relationship between the home and the School. ”



## Compliments and Complaints

We genuinely value your feedback, as it assists us to improve. We appreciate that the occasional issue or concern may arise. If you have cause for concern about something at school, please contact the class teacher in the first instance. Should difficulties remain unresolved, an appointment can be made with the Dean of Primary through the Primary School Reception. The College Principal is available by appointment through the College Reception should issues remain unresolved. The College Board is the final recourse to addressing problems. A copy of the Resolution of Parents and Students Complaints and Grievances Policy can be located on the College website.

The Primary School operates brilliantly with the support of the wonderful staff, so if something is going well, can you please also let us know.

## Special Events

- Mothers Day
- Fathers Day
- Special theme days
- Book Week
- Easter
- Anzac Day
- Learning Journey
- Y6 Dinner
- Y3-6 Primary Presentation and Awards Assembly
- PK-6 Christmas Concert
- Others dates will be advised throughout the year in the Primary Notices.

## Parking

We encourage parents to park at the HBF Arena Carpark and access the Primary School via the Western Oval side path and ramp.

## Transport

Transperth provides service to Shenton Avenue and Candlewood Boulevard. Rail transport is also an option. Students may ride their bicycles and lock them at the end of the Primary Hall building, under cover.

## Money Collection

Excursions will be covered by school fees. However, if it becomes necessary to collect additional sums of money from the children for items such as bus fares, clubs etc., money will be collected via direct debit into a nominated school account. We also collect money for fundraising, gold coin donations and school photos (which is in cash).

## Excursions

Permission for and information about excursions will be via Consent2Go. Families will receive an email about excursions and are kindly asked to provide prompt responses and ensure medical details remain current.

## Student Book Lists

Primary booklists are available on the College website located under the 'Learning at LJBC' menu tab. Booklists also include stationery requirements.

## Student Stationery Requirements

Parents/ Guardians are requested to provide their children with the necessary stationery items that they will require throughout the year. These need to be replaced as they are used so that children always have the necessary equipment to enable them to perform to the best of their ability. Please ensure all items are clearly labelled with your child's name, unless the Booklist states otherwise.

Students need a College Library Bag to protect school library books as they are carried to and from school. In order to protect the books students may only borrow library books with this bag.



## Food at School

We encourage inclusion of a variety of healthy food options for your child at school and limited pre-packaged foods. Foods such as cheese, yoghurt, fruit, vegetables, savoury muffins, mini quiches and sandwiches are all good selections. Please do not include lollies, chocolates and chips as these are not filling and do not provide long-lasting energy. Please label all lunch containers and bottles with students' names.

**Please do not include NUTS and foods with nuts in them,** as we have children who have life-threatening allergies to these items. Please be mindful of class children who have intolerances to dairy, egg and seafood. The teacher will advise if there is a life-threatening allergy and which foods to avoid.

### Examples of foods to send to school:

- Recess – a filling snack e.g. small sandwich, cheese and crackers, yoghurt, fruit
- Lunch - A sandwich, wrap, small salad, boiled egg, meat cubes, cheese, etc. are all good options. Please try not to include too much food as young children often get anxious if they cannot eat everything in their lunchbox and become concerned that they might miss their play time. Any uneaten food will be sent home.
- Crunch 'n Sip (K-1) - a small container with bite-sized cut-up fruit or vegetables for a quick afternoon snack.
- Daily Water bottle – water only please, no juice or other drinks.

## Canteen Lunch Orders

Pre Kindergarten and Kindergarten students are not permitted to order lunches from the Canteen. Pre Primary to Year 6 students may order lunch each week day from the Canteen.

Lunches are ordered online via Flexischools at <https://flexischools.com.au> (located under the 'Community' menu tab of our website) or in person before school at the Canteen. Lunch orders will not be accepted after 8.30am.

Help in the Canteen is always appreciated. Please contact the Canteen Manager by telephone on 9300 7409. Hours worked in the Canteen can be counted towards PPP hours.

## Birthdays

Birthdays are special times for children and class teachers delight in acknowledging these events. As we have a number of students with moderate to severe food allergies, we ask that you refrain from sending food of any description, including birthday cakes and food treats. Teachers will ensure your child receives some form of special recognition in class when it is their birthday.

## Lost Property

All lost and unmarked property will be placed in a box in the Primary Hall. Parents wishing to look for lost items should check this box. At the end of each term, items will be displayed for collection. Correct labelling of clothing assists with clothing return.



*We encourage inclusion of a variety of healthy food options for your child at school and limited pre-packaged foods.*





## Uniform

All LJBC students are required to wear school uniform. All uniform items are available from the College Uniform Shop, except for shoes. Please clearly label all items of clothing. The only jewellery permitted is earrings (plain gold or silver studs or sleepers), and a plain watch. Hairpieces, glitter, lip balm, nail polish, tattoos and make-up are not permitted.

Please provide a full change of clothing for your child in a plastic bag in their school bag for all Pre Kindergarten and Kindergarten students.

## General Appearance

We seek to encourage a high standard of personal cleanliness, hygiene and neat appearance at all times. Please assist your child in learning how to blow their own nose, attend to themselves in the toilet and wash and dry their hands independently.

Hair needs to be of a conservative style, well groomed, neat, clean (i.e. regularly washed) and tidy at all times, e.g. no undercuts or novelty shaved areas. If hair is longer than the shoulders, it needs to be tied back with hair accessories that are plain black, navy, light blue, yellow or gold, and are not decorated or patterned. Please contact the Dean of Primary if you have any queries.

Because of head lice problems in schools, parents are asked to be vigilant in checking their children's hair. Parents will be informed when head lice have been found in students' hair and are encouraged to check their own child's hair for the next couple of days for small white specks (eggs).



## Sun Protection (Hats and Sun Cream)

We believe that it is important to educate children about the value of protection from the sun. All children must wear their College hat for outside activities and need to have a hat marked with their name in their bag at all times (summer and winter). We discourage the sharing of hats due to head lice. If they do not have a hat, children may play in the shade but may have to sit out of some activities at Physical Education.

During summer (Terms 1 and 4) children are encouraged to administer sun cream before outdoor play. If your child has an allergy to creams, please provide your child with their own sun cream to keep in their bag and notify the class teacher.

## Dental Therapy Centre

The Dental Therapy Centre aims to provide a continuous preventative dental service for each enrolled child. It is supervised by a dental officer from the Public Health Department's Dental Health Service and is staffed by dental health therapists, specially trained to provide dental care for children.

This service operates at the Dental Therapy Centre at Heathridge Primary School. Your child will receive a tentative appointment card sometime during their Pre Primary year. Please contact the Centre if you wish to change the appointment time. Transport to the Dental Therapy Centre is the responsibility of the parents.



## Graffiti and vandalism

Students should show respect for College property and the property of others. Any form of deliberate vandalism of property will be treated seriously and may lead to expulsion, even for a first offence.

Students may be asked to replace items (including stationery items) if they have been mistreated, or have graffiti on them. Accidental damage to College property or another person's property must be reported immediately to a staff member.

The College may seek restitution from students and/or parents/guardians in cases where the student's deliberate, mischievous or careless action results in damage to College property.

## Games and electronic equipment

Children should not bring personal electronic games, iPads, and other electronic items to school unless part of a documented school plan, as they may be lost or damaged. Money and other valuables should not be brought to school unless for specified reasons. Smart Watches are discouraged and must be placed on 'School' mode at all times. No photos are to be taken or phone calls made on smart watches.

## Mobile phones

For students catching public transport or where for safety concerns parents choose to give children a mobile phone, these should remain off for the day and only checked at the end of the day. Mobile telephones should be turned off and out of sight from 8.30am to 3pm, including break times. All messages to students must go through the Primary Reception during the day. Mobile phones that are turned on during the day will be confiscated and collected at the end of the day.

## Houses

Students are divided into six Houses:

**Lancier (orange), James (red), Batavia (purple), Cumberland (green), Windsor (blue) and Arcadia (yellow).**

Inter House competition is encouraged and activities are designed to promote sportsmanship, enjoyment, cooperation, team spirit, and endeavour. Every effort is made to allocate children in the same family to the same House.

**Lancier (orange) was a 285 ton barque which left Mauritius for Hobart Town in 1839. It struck Stragglers Rock within sight of Fremantle and sank quickly, without loss of life. There are reports of over a tonne of silver in the cargo; none has been recovered. It sank in fair, calm weather in daytime, though this was hotly disputed by its owners.**

**James (red) was a 195 ton brig which left Kingstown, Ireland for Fremantle via Brazil in 1829. Six months later it arrived in Fremantle where it was blown ashore at Owen's Anchorage. Although no lives were lost there was substantial hardship during the voyage, and goods on the ship were damaged by exposure.**

**Batavia (purple) was a large merchant ship capable of carrying 600 tonnes of cargo and was on her maiden voyage from Amsterdam to the East Indies. It crashed onto the Abrolhos Islands north of Geraldton at night in 1829 with her sails set. Mutiny to turn it into a pirate ship was about to occur before it struck the reef. Substantial treasure was on board, quantities of which have never been recovered.**

**Cumberland (green) was a 444 tonne ship which left Bombay for Sydney in 1829 with a cargo of wheat. In Sydney it was loaded with coal for the return voyage to India and on 30 March 1830 ran aground and sank at Cape Leeuwin. Its crew set out for Fremantle in small boats and most of them arrived three days later. The ship broke up quickly.**

**Windsor (blue) was a ship that had departed from Fremantle for Hong Kong with two separate cargoes of sandalwood on board. During heavy weather, although Captain James Walters thought he had made sufficient allowance to counter the current and wind, the Windsor struck Half Moon reef at 9.50pm on 2 February 1908.**

**Arcadia (yellow) was a barque that was condemned as a wreck by the underwriters after the vessel ran aground on 25 April 1900 and then re-floated by its new owner M.C. Davies. On 22 July 1900 during one of the severest storms to hit the South-West coast the Arcadia was driven ashore again and this time totally wrecked.**





## Substance Abuse Policy

The Lake Joondalup Baptist College views the use, possession or supply of any abusive substance, be it alcohol, tobacco, solvents or illicit drugs, very seriously.

Students may not bring alcohol, cigarettes or other drugs onto the College site, nor have possession of them at any School function, while representing the School or whilst wearing the College uniform.

Infringements will be treated seriously and may lead to exclusion, even for a first offence.

## Learning Technology

Learning technologies, generally computers and the internet, must be used by students in accordance with the conditions described in Learning Technologies Agreement found on the College website. A Learning Technologies Code of Conduct document is sent to all students in Years 4 to 6 before being granted a College login. All students are required to be compliant with the conditions for use. Students who do not work within these conditions will have their computer access withdrawn.

## Learning Enhancement

Our Primary Learning Enhancement Programs offer learning support and extension. These programs are offered to assist students to achieve to the best of their abilities.

For those students who may be experiencing learning difficulties in Pre Kindergarten to Year 6, we offer learning support programs and assistance within an integrated and inclusive environment. This includes early detection and early intervention of learning difficulties, with support from specialist teachers in English and Mathematics.

Enrichment may be offered to students from Year 3 to Year 6 who operate beyond year level curriculum. A number of team events are run throughout the year including the Australian Problem Solving Mathematical Olympiads, Write a Book in a Day and Creative Edge Problem Solving.



## Specialists

Specialist programs are delivered in Visual Arts, Music (which includes choirs, performing groups, and singing groups), Languages (Japanese), Physical Education and Library Studies. Interschool sport includes Swimming, Athletics, Cross Country Running and winter sports in Touch Rugby, Australian Rules Football, Soccer, Netball and Hockey. A number of different sports are offered to allow children the opportunity to develop skills and participate in a range of sports.

## Co-curricular

The Primary School offers a range of co-curricular programs to complement each student's academic life and hold a strong belief that these activities are important in their overall holistic development.

All of our students are encouraged to be highly committed to their chosen co-curricular activities and are assured that their full involvement will be supported.

Clubs and co-curricular activities occur before school, after school and during some lunchtimes.

## Camps

Where scheduled, as part of an educational program, student participation in camps is compulsory. A camp and outdoor education program operates for Year 4 - 6 students. For example: the Year 4 students attending a one-night Zoo Camp in Term 4, a two-night Rottnest Island Adventure Camp and a Sydney / Canberra Tour.



## In Term Swimming Lessons - PP to Year 6

In-Term swimming lessons will be held for PP to Year 6 students. These lessons are a compulsory component of the Physical Education program.

## College Enrolment Procedure

Generally, there are waiting lists for entry to the College, although vacancies may sometimes be available for immediate entry. To be entered on the waiting lists, a non-refundable Registration Fee is charged.

Enrolment places are offered in the following order: to siblings of current or past students of the College and to the children of former students of the College. Any remaining vacancies are offered to new families in order of registration. Religious affiliation is not a factor. When an offer of place is accepted by the family, a non-refundable and non-transferable enrolment fee and a bond are payable. The bond is credited to the family account the second semester the student is at the College. This enrolment fee and bond will not be refunded should a student not commence studies at LJBC.

If you have any questions concerning enrolments, you are invited to contact our Enrolment Registrar at the College on 9300 7444, or by email at [Enrolments@ljbc.wa.edu.au](mailto:Enrolments@ljbc.wa.edu.au).

## Fees

Lake Joondalup Baptist College is a non-profit organisation which exists to provide a Christian, Independent education. Fees are reviewed each year and set as an annual fee after establishing the year's total anticipated operating income and costs.

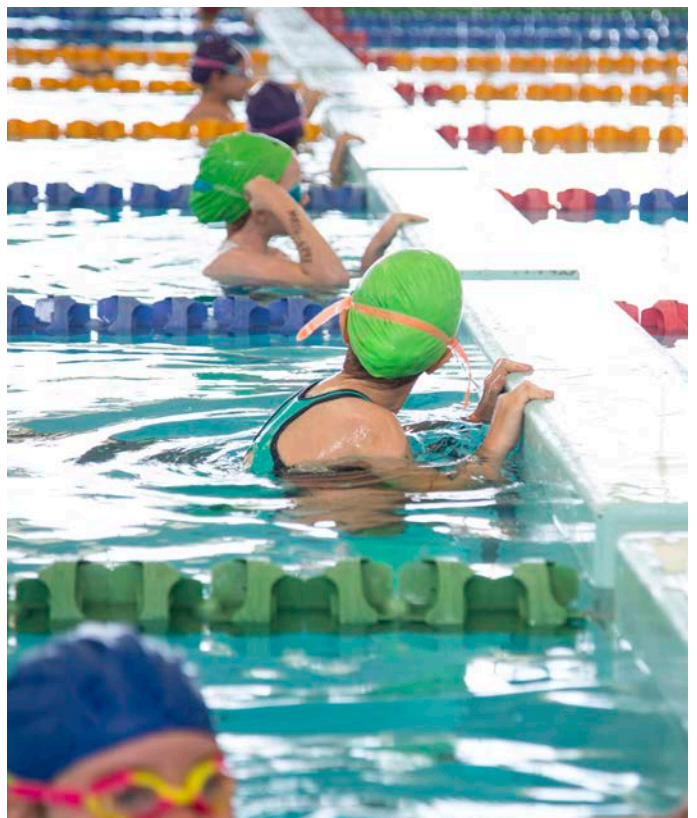
## Terminating your Child/Children's enrolment at LJBC

If your child leaves the College after commencing, you are required to give the College written notice:

- a. by no later than the first day of the term at the end of which it is intended he/she should leave, or**
- b. (if it is intended that he/she should leave during a term) not later than the first day of the preceding term.**

If those requirements are not met, a charge of ten weeks' tuition fees will be payable for each child.

In the event that your child is asked to leave the College, fees already paid will not be refunded and any outstanding fees, plus ten weeks' tuition fees will be payable.





## The Early Years – Pre Kindergarten to Year 2

The Early Years Learning area comprises of the Pre Kindergarten, Kindergarten, Pre Primary, and Year 1 and Year 2 year levels of the College. Early Years Learning aims to lay firm foundations for enjoyable life-long learning by:

1. Providing a range of play-based learning experiences that focus on developing early literacy, numeracy and social skills
2. Implementing early intervention strategies to support students
3. Establishing, or further developing, relationships with our College families, based on mutual respect and trust
4. Being a caring and nurturing environment within a Christian context.

There is increasing evidence from a broad research base in health, developmental psychology, neuroscience and education, of the importance of optimum family and community experiences for children during the earliest years of childhood and development. There is much evidence that these experiences can establish a template that has the potential to play a significant role in later life. Early experiences and the quality of nurturing and cognitive stimulation which children receive in the first few years of schooling may have a big impact on their development and the course they choose to follow in life. We seek to partner with our families to establish an excellent, positive foundation of learning for our very young students. The program will follow the Australian Early Years Learning Framework, The Australian Curriculum, the Western Australian Curriculum Assessment Outline, and the Western Australian Kindergarten Guidelines.

It is very important to have early intervention strategies in place at the College, so that families can be promptly notified if there are any concerns regarding a student's development and learning. Teachers will aim to work with therapists and other professionals to identify students requiring intervention strategies.

Lake Joondalup Baptist College, provides opportunities for quality engagement through meaningful play. The College provides:

1. Children with choices in play and learning, to enable them to engage (interest, individuality)
2. Children with opportunities to wonder, think and problem solve when they learn and play, which develops their creativity and innovation (wonder, ideas, lateral thinking)
3. A positive learning environment that encourages children to challenge themselves (risk, responsibility, rules)
4. An environment that inspires children to be respectful, selfless, accepting and loving (emotional intelligence, collaboration, entitlement, conflict, Christian mission)

The Pre Kindergarten, Kindergarten and Pre Primary students wear a different, more casual uniform to the Primary and Secondary students. This allows them to play and learn according to their age group's abilities and needs.

We recognise that children are unique, precious creations and endeavour to celebrate the potential of each child through a curriculum that allows them to explore and discover concepts for themselves in a safe and supportive learning environment. Class themes and topics are integrated across learning areas and skills are interdependent. Christian Education is an important part of the curriculum and fundamental to our College mission.

### Early Years Learning Facilities

The ELC area consists of air conditioned indoor classrooms with wet areas and cooking facilities and an outside fenced play space, including nature play, undercover areas, bicycle track and sand pits. Students may often use other facilities in the College for Music, Sport, Art and Library studies.

The WA Kindergarten Curriculum Guidelines (The School Curriculum Standards Authority) and Early Years Learning Framework (EYLF) with the overarching themes of Being, Belonging, Becoming, is the basis of our Pre Kindergarten and Kindergarten curriculum. The Pre Primary program builds upon the EYLF and is the first year of the Australian Curriculum introduction, called 'Foundation' year.

*We recognise  
that children are  
unique, precious  
creations and  
endeavour to  
celebrate the  
potential of each  
child.*



## The Pre Kindergarten Program

The Pre Kindergarten Learning program at LJBC is for children who will turn three years of age before 30 June of that year. It runs for a two hour session once per week, facilitated by parent attendance in Semester 1. There are two Pre Kindergarten groups, known as Pre Kindy Possums and Pre Kindy Puggles.

The program informs a creative, play-based curriculum enabling children to connect with each other and their world, to have a strong sense of well-being and be confident and effective learners. It seeks to provide children with meaningful experiences that promote the development of spiritual, social, emotional, language, intellectual, creative and physical skills.

Our aim for the Pre Kindergarten at Lake Joondalup Baptist College is to foster a safe, positive and nurturing environment that reflects best practice in early childhood education and where young learners and their families are supported in all aspects of their life development. The program seeks to provide a positive introduction to schooling, where families may feel part of a caring and trustworthy community and be partners in their child's education. Students are encouraged to achieve to their potential, develop the habits of life-long learners and grow in Wisdom, Justice and Mercy, within a Christian context.

## The Kindergarten Program

Kindergarten is a gradual introduction to schooling in a fun, yet structured environment for children who have turned four years of age or are turning four before 30 June of that year. In planning a 'learning through play' environment for this age group, LJBC aims to take into account the developmental stages of these children. All children are encouraged to develop their strengths in a supportive environment. It was Albert Einstein who said that 'imagination is greater than knowledge'. We aim to develop a play-based program committed to developing each child's imagination and personality using a differentiated curriculum. The program operates over three full days of the week in the three Kindergarten classrooms.

Kindergarten students have weekly music lesson and are provided with a Literacy backpack. Within the backpack is a collection of books, question cards to support students in developing oral language and comprehension skills, a puzzle and a game. The backpack is in addition to the general library book loans. Students enjoy a Fundamental Movement Perceptual Motor Program, which enables the improvement of fundamental movement skills and fitness.

## The Pre Primary Program

Pre Primary aims to continue to develop and foster an enjoyment of learning, while encouraging equity and respect for others in the learning environment and community. It is a program for children who have turned five years of age

or are turning five before 30 June of that year. During this stage of their schooling, children are given the opportunity to develop essential foundations on which to build their knowledge, skills and values, particularly in the areas of social and emotional wellbeing, literacy and numeracy. We recognise that children are unique and endeavour to celebrate the unique potential of each child through a curriculum that allows children to explore and discover concepts for themselves with adult guidance. The program will operate in the Pre Primary classrooms fulltime and is the first year of the Australian Curriculum Learning Program, called 'Foundation'.

Pre Primary students have weekly lessons with a specialist teacher in a second language, which is Japanese. Students are also provided with specialist music lessons once a week. Pre Primary children are able to borrow books regularly from the Primary Library during their weekly Library lesson. Students also enjoy a Fundamental Movement Perceptual Motor Program weekly which will enable the improvement of fundamental movement skills and fitness.

“  
*We seek to provide a positive introduction to schooling, where families may feel part of a caring and trustworthy community and be partners in their child's education.*  
”





## Year 1 and 2 Program

The Year 1 and 2 programs operate within a safe and nurturing environment, committed to the development of the 'whole child' (physical, academic, spiritual, emotional and social). We provide a variety of programs, which will focus on the individual needs of each young learner. Students enjoy the benefits of using computers to support and enhance learning. Quality literacy and numeracy programs are provided at each year level, with literacy integrated across all learning areas. Learning programs will be effective, exciting, contemporary and challenging.

The Year 1 and 2 area consists of air conditioned indoor classrooms with wet areas and cooking facilities and an outside fenced play space, including nature play, undercover areas, bicycle track and sand pits and use of the Primary Oval. Students use other facilities in the College for Music, Sport, Art, Learning Enhancement and Library studies.

## Early Years Assessment

Student progress is regularly assessed in a variety of ways: skills checklists, anecdotal records, formal and informal testing, student portfolios and observation. The On-Entry assessment program in literacy and numeracy is conducted in Term 1 for Pre Primary and Year 1.

## Early Years Reporting

Reporting is an opportunity to celebrate a child's strengths and set goals for improvement in other areas. Parents are reported to in a variety of ways as listed below.

### Learning Journals/Student Workbooks -

Taken home at the end of each term and viewed and returned promptly. Viewed at Term 3 Learning Journey.

**Reports** - Formal Report Semester 1 and 2

**Interviews** - Terms 1 and 2 and as needed

**Learning Journey** - Term 3

## Pre Kindergarten, Kindergarten and Pre Primary Homework

Formal homework will not be set for these Early Years classes. All activities at home or play can assist children to develop essential knowledge and skills including literacy, numeracy and problem solving. These are often done in the context of family activities including:

- shopping
- preparation of food
- listening to stories, learning songs and nursery rhymes
- discussion about what is happening at school
- reading
- library borrowing
- family outings



Pre Primary students will begin to take home a book each week from the Shared Reading program mid way during Term 1 of the year. Prompt cards may be supplied to support families in engaging students in rich conversation around the text. At all times, parents/guardians are encouraged to read to their children of all ages, and to facilitate the child's reading for pleasure.

## Year 1 and 2 Homework

Year 1 and 2 students take home a book regularly from the Home Reading program during the year. At all times, parents/guardians are encouraged to read to their children of all ages, and to facilitate the child's reading for pleasure. Year 1 and 2 students also take home a few class sight words and spelling words to practise.

## Speech and Occupational Therapy

Speech screening, by a professional speech pathologist will occur for all Kindergarten students and any Pre Primary students who have not been previously screened. Parent permission is requested for screening. After screening, parents will be notified if their child requires intervention in this area. Speech and occupational therapy is offered weekly on campus. Parents liaise directly with the service provider and pay for the cost of the sessions.

## Community Child Health Nurse

Routine health screening for four to six year olds takes place during the Kindergarten and Pre Primary years by the Department of Education Community Health nurses. Health forms must be completed by parents prior to screening taking place. Notifications will be sent to families throughout the year.

## Early Years Excursions/Incursions

Excursions and incursions (visiting performers or specialist programs) may be organised by teachers. Costs for both incursions and excursions are included in the annual school fees. Parents will be fully informed of these activities via email through Consent2Go. Due to their young age, Kindergarten students may not always participate in off-site excursions, but may enjoy incursions, which will aim to enhance their learning.

## Days of Instruction - Early Years

**Pre Kindergarten will operate for two hours per week, on Fridays in Room P1:**

Pre Kindy Possums – 8.30 to 10.30am

Pre Kindy Puggles – 11.00am to 1.00pm

**Kindergarten classes will operate for 3 days each week as follows:**

Tuesdays, Wednesdays and Thursdays each week.

## Child Safety and Parent Rosters - Early Years – signing in

The Western Australian government has responded to the Royal Commission by recently recommending new standards of Child Safety for organisations which are explicitly linked to Registration Standards for all schools. To this end, there is a requirement to maintain a register in Pre Kindergarten and Kindergarten of who is responsible for the class and who is working with the children at any time, noting the name of the person, time in, time out and their role. Class Teachers, Education Assistants, Specialist Teachers and Special Needs Assistants, Relief Teachers and Relief Education Assistants, regular and relief morning tea and lunch time duty staff that work with or supervise Pre Kindergarten and Kindergarten students must record and sign in and out on the register each time they are working with the students. Pre Kindergarten Parents/Guardians are asked to sign in and out for each day of Semester 1 when they attend the session.

Parent rosters will be on display in each Early Years classroom. We welcome mothers, fathers and grandparents to be on the roster. Children love having a family member on roster and this can be a special time to share with your child/grandchild. When rostered on please sign in at Primary Reception and wear the visitor's label. A few examples of the ways parents can help is to assist in the Perceptual Motor Programme (PMP) activities, supervise a table activity, as general classroom help, or assist with an incursion or excursion.

## Collection of Students - Early Years

All Pre Kindergarten, Kindergarten and Pre Primary students need to be collected from the classroom by a previously nominated person, named on the Collection Register or communicated to the teacher in written form (in either the class Communication Book, via dated letter or by email.) We prefer adults to collect Early Years students, however if it is necessary, permission may be given for a Primary or Secondary sibling to collect Kindergarten or Pre Primary students. (Please see the Dean of Primary). Pre Kindergarten students must be collected only by an adult. The Early Years staff will assist with the releasing of students at the completion of the school day.

If a shared Parenting Plan is in place, please speak with the teachers so they are informed of which days/weeks different parents/grandparents are collecting children.



## The Primary Years – Years 3, 4, 5 and 6

### Primary Years 3 and 4

The Year 3 and 4 team aims to establish a friendly and welcoming environment where all students feel valued and safe. Staff are committed to working towards developing the whole child - physical, academic, emotional and spiritual. Learning programs aim to lay solid foundations for life-long learning through being motivating, dynamic and challenging. Strong emphasis is placed upon literacy and numeracy programs that are sequential and allow children to work at their level of ability, with intervention and support offered where appropriate.

Language studies are now directed on learning the focus language and applying this to social and community settings. An outstanding music program incorporates weekly lessons, choir opportunities and a Year 4 + Year 2 string program. Private music tuition is offered. A Visual Arts teacher provides students with a dynamic program to introduce them to a range of art opportunities with a Primary Visual Art Exhibition in Term 3.

Students have weekly Library lessons where they utilise the Primary Library facilities and resources. They can also access the Library individually either before school (8.10am) or after school (3 to 4pm, Mon, Wed and Thurs and 3 to 3.45pm on Friday) and most lunchtimes.

High quality Physical Education and fitness programs are offered and health awareness is encouraged at each year level.

### Year 3 and 4 Homework

Homework aims to provide our students with opportunities to consolidate the skills and concepts they have learned at school. It allows for positive communications to take place between home and school. It may establish good routines, which create good learning habits for our students as they move through the College.

Primary homework is set according to the needs of the students within the year group. Tasks are often open ended to provide opportunities for students to be challenged and extended. Homework is not set for weekends or holidays, however, from time to time a task may flow over these periods and for some year groups the homework may run over a two-week period. Students in Years 3-6 are given a homework diary. Homework is set by classroom teachers and may differ slightly within a cohort. This is to provide the best opportunities for teachers to respond to the learning needs of the students within their classrooms. When a task is not understood or the demands of the family routine prevent homework from being completed within the allocated timeframe, parents are asked to write a note or email the classroom teacher. The classroom teacher will work with the parents to support their child.

### Primary Years 5 and 6

The Year 5 and 6 program aims to provide a happy, secure learning environment and seeks to develop in each student self-confidence, with tolerance of, and concern for others.

The Year 5 and 6 Primary program endeavours to be a balanced, non-prejudiced curriculum which includes



physical, social, academic, emotional and spiritual development. It aims to challenge each child according to his/her ability and to encourage children to take responsibility for their own behaviour and learning during their transition through to Secondary schooling in Year 7.

In Year 5, students participate in a Wind Instrument Sponsorship and Band Program which provides a hands on musical experience, giving students the opportunity to try new instruments. All students receive free tuition in an instrument that is selected for them for 14 weeks. Instruments include the flute, clarinet, saxophone, trumpet or the trombone. Halfway through their 14-week program, they begin participating in a Concert Band during music class. At the culmination of their program, the students present a small concert for parents, staff and students, demonstrating what they have learnt.

## Year 5 and 6 Homework

Year 5 and 6 students will use their diary to record their homework, record finishing off work and manage assignments and project work. Teachers aim to build on the students own personal organisation skills and independence essential for later learning.

## Assessment and Reporting – Primary Years

**Student progress is regularly assessed in a variety of ways:** skills checklists, anecdotal records, formal and informal testing, student portfolios and observation.

Reporting is an opportunity to celebrate a child’s strengths and set goals for improvement in other areas. Parents are reported to in a variety of ways as listed below.

### Learning Journals/Student Workbooks -

May be taken home at the end of each term and viewed and returned promptly. Viewed at Term 3 Learning Journey

**Reports** - Formal Report Semester 1 and 2

**Parent Connect Meetings** - Terms 1 and 2 and as needed

**Learning Journey** - Term 3



## Primary Student Behaviour Management

### College Charter of Goodwill

#### All students and teachers to be able to:

- Learn without distraction or interference from others
- Work in a safe environment
- Feel safe from harassment, bullying and discrimination
- Be shown respect by their peers and teachers
- Be empowered to take responsibility for their own behaviour and progress

## THE LJ WAY

These are the foundation for building positive relationships and promoting responsible behaviour.

### Kindness (Be Kind)

The act of going out of your way to be nice to someone or show a person you care. If you see someone who looks upset or down, just simply smile and say hello to them, maybe strike up a conversation.

### Respect (Be Respectful)

Having positive regard for yourself and treating others with consideration and regard. Respect another person’s right to hold views and express these. Be aware of others and their cultures, accept diversity, be included and include others.

### Fairness (Be Fair)

When we treat others as we would like to be treated and we provide everyone with opportunities to succeed, we are showing fairness.

The key to effective school discipline is the quality of relationships between teachers and students as well as parents/guardians.

Students, parents/guardians and teachers have the right to a safe, orderly school environment where students can learn and feel safe at all times, and teachers can teach.

Students should be encouraged to accept responsibility and to develop self-discipline. It is necessary that we maintain firm discipline of all students. This means that discipline will be consistent, fair and carried out in a supportive environment.

# THE LJ WAY



## Setting up for Success

The whole community can set the tone for student success by relating positively to each other including parents, other students and staff. We seek to see all members of the community taking the time to form appropriate connections through welcoming and inclusive practise. Speaking positively about each other allows the students to in turn feel that they are a part of the school community and that they belong. Meeting with the class teacher in the first instance is a good first step. If more support is needed, the Primary Student Engagement Leader and Dean of Primary may be contacted to discuss matters further.

## Primary Safety and Wellbeing

The Primary School has developed a Primary well-being and safety curriculum. Classroom teachers teach positive behaviours and Social and Emotional Learning programs explicitly in classes. In addition, a number of clubs including 'Kids with Courage' are offered to students.

It is a requirement that all Western Australian schools provide Protective Behaviours curriculum to all students. Lake Joondalup Baptist College is committed to helping create safer communities for our children and uses a Protective Behaviours program across all year levels.

The Protective Behaviours program focuses on providing children with the knowledge and skills to identify unsafe behaviours, and know how to respond. The program is relevant for family and domestic violence, bullying, abuse (physical, emotional or sexual), and online abuse. Lake Joondalup Baptist College is using curriculum developed by WA Child Safety Services and is aligned with the Western Australian School Curriculum and Standards Authority requirements.

This year for our LJ Awards given at formal assemblies, our focus will be on the recognition and reinforcement of the core character values of Lake Joondalup Baptist College. Our aim is to continue to foster a positive school environment by focusing on positive character traits. In class and during worship assemblies, students will have opportunities to hear about and discuss these core values, supporting a growth mindset and a positive community environment.

## Behavioural Expectations

Teachers maintain a positive classroom climate and take a personal interest in each student. Discipline standards are high and each student is to be accountable for his/her behaviour. Where necessary, students will be counselled and supported through their journey to develop skills leading to better self-regulation with the expectation that they will demonstrate improvement.

Students who persist with disruptive or inappropriate behaviour will be offered support but in order to preserve the learning of others, they will be removed from classes and, ultimately, they will have the privilege of enrolment withdrawn.

The College must protect the rights and well-being of all students and no student should be allowed to jeopardise the learning of others or to disrupt the harmony of the School.

The Primary School Leadership Team will work with individual teachers and students to ensure that the behaviour standards of the School are maintained at a high level. All teachers will consistently use the same behaviour management model throughout the School.

It is a requirement for enrolment that Parents/Guardians and students support the ethos, and standards of conduct and dress expected by the College, and that policies are supported by compliance.



*Everyone has the right to be happy and treated fairly.*



## Primary School Playground Behaviour

We acknowledge that everyone has the right to be happy and treated fairly.

We will achieve this by:

1. **Playing safe sensible games**
2. **Playing only in safe playing areas**
3. **Walking on all paved areas**
4. **Being punctual at all times**
5. **Consuming all food and drink in the proper areas**
6. **Remaining seated at lunchtime until dismissed by the duty teacher**
7. **Placing all litter in rubbish bins**
8. **Being in buildings only when teacher is present**
9. **Showing good manners to everyone at all times**
10. **Showing respect for other people and their property**

## Creating a Positive Environment

Positive behaviour is often rewarded with school wide positive consequences, in addition to a teacher's class based strategies.

- **LJ stickers**
- **LJ Award Certificates awarded at Assemblies**
- **House tokens**
- **Class Awards**
- **Class Merits**
- **Golden Commendations**
- **Principal Awards**

The teacher employs non-verbal and non-direct methods of redirection such as eye contact, proximity and options for the child and uses wisdom and understanding before going through the LJBC 1,2,3 process:

**1**

The teacher informs the student that they are on a 1 because of their behaviour. This signals to the student that this behavior should now stop and be redirected to working.

**2**

If the behaviour continues, the teacher informs the student that they are on a 2 because of their continued behaviour. The teacher may move or offer the student an alternative choice such as a separate desk or a designated area to refocus.

**3**

If the behaviour continues the teacher informs the student that they are on a 3 and sends the student to a Buddy Time Out class. The student will complete 5 to 10 minutes in the classroom, not including break times. The student is then sent back to their own class. Following this the student meets with their teacher to have a discussion about their behaviour (in the Early Years classes). Students in the Primary Years may skip this step.

**4**

If the negative behaviour continues that same day, the student is required to meet with the Primary Leaders or the Dean of Primary. Depending on the severity of the issue, the teacher may decide to skip steps 2 and 3 and direct the student immediately to the Dean of Primary. Parents will be informed and a plan will be developed for reintroduction to the classroom, through a **restorative process**.

## LJ's Playground Rules

**Use kind words** that compliment and support others in your game.

**Respect** each other's feelings and try not to hurt them.

**Play nicely** and follow the rules of the game.

**Be honest** when playing games. This will make it more fun!



## Class Principles for Medium and High Level Misbehaviour

On occasion, there are incidences of higher levels of misbehaviour. In these circumstances, teachers will respond in a different manner in order to maintain safety or good order within the School.

When a student displays behaviours that are anti-social, including some cases of bullying, verbal abuse, violence and some cases of major dishonesty, a teacher or the Primary Leaders will direct the student to the Dean of Primary. Parents will be informed and in severe cases, may be required to collect their child. A documented safety and intervention plan will be developed with all parties, with the aim of restoring the student to better behavioural outcomes.

Ongoing misbehaviour will result in exclusion from school and in extreme cases, withdrawal of enrolment by the College Principal PK-12.

## Restorative Process

Restorative Process is an ethos that emphasises repairing the harm caused or revealed by poor behaviour. It is best accomplished through cooperative processes that include all people involved. Restorative Justice is script based, whereby the people involved are 'interviewed' and gain a good understanding of the impact their actions have had on others. This also gives a great opportunity for all parties to be heard and understood.

*An example of the script is as follows.*

*What happened?*

*What happened next?*

*What were you thinking when ...?*

*What are you thinking now?*

*Who has been affected by your actions?*

*What can we do to fix this up?*

*In the future, what could you do to make this better?*

## Playground Behaviour

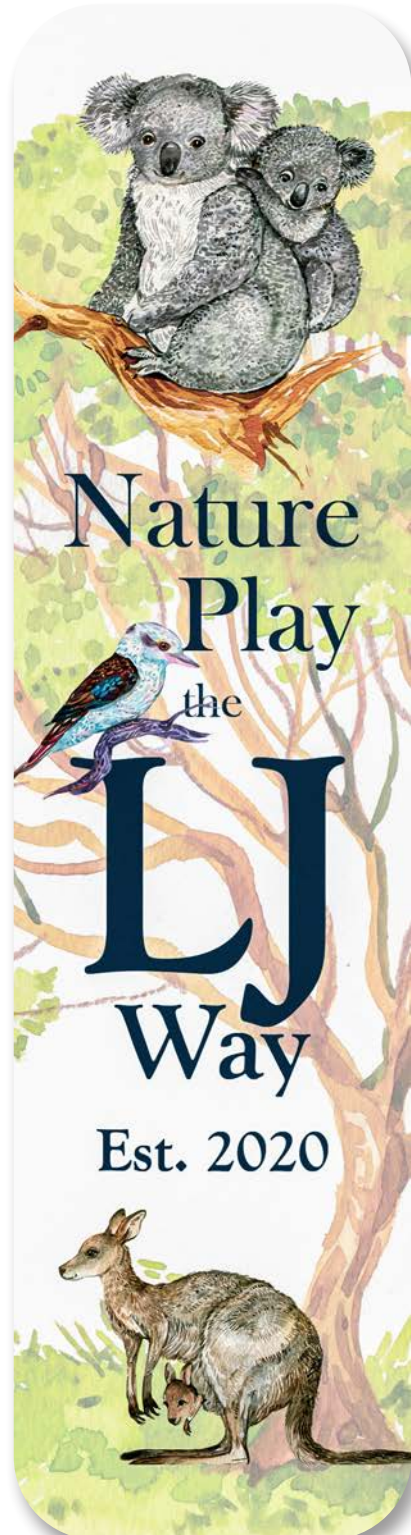
Dealing with unacceptable playground behaviour  
When a student exhibits inappropriate behaviour in the playground:

- 1** The teacher may ask the student to sit in a Time Out area for a short period of time.
- 2** For a serious misdemeanor, the teacher reports student behaviour immediately and the student is sent to discuss behaviour or incident with the Primary Student Engagement Leader.
- 3** Parents are often contacted and behaviour is discussed and outcome negotiated. In ongoing or high level concerns that are a danger to students, the Dean of Primary and Primary Leaders will work with families to improve the behavioural outcomes of the student. The student will work through a modification plan with the expectation that behaviour will improve.

## Responsible Relationships

The College believes that no one deserves to be bullied, even if their behaviour is irritating or annoying. Retaliation is not acceptable behaviour at LJBC. Students are encouraged to deal with problems in other ways. Discussions on this topic in classrooms occur continually throughout the year. Positive change and resolution of disputes is the priority but bullying behaviour, whether physical or verbal, will not be tolerated.

If you have concerns, please contact the School, discussing issues with your child's classroom teacher in the first instance.





# Primary Uniform

## Uniform Policy

We seek to encourage a high standard of personal cleanliness and hygiene, and neat appearance at all times. All children are required to wear the College uniform in a manner which is a credit to the student and the College.

Students in Pre Kindergarten, Kindergarten and Pre Primary wear their uniform each day.

Students in Years 1-6 wear the appropriate summer/winter and Physical Education uniforms on the allocated day, as set out by the class teacher.

Summer uniform is worn in Terms 1 and 4 and winter uniform in Terms 2 and 3. Any changeover periods will be advised in writing. The Uniform Shop hours are:  
Tuesday - 8 to 11.30am and 12.30 to 4pm.  
Thursday - 8 to 11.30am and 12.30 to 4pm.

Uniforms may also be ordered online via Flexischool.

## Pre Kindergarten Uniform

### Summer

- Own shorts
- Own bag
- LJBC PK/K/PP coloured T-shirt
- LJBC white sports socks and velcro white (where possible) sports shoes
- College hat

### Winter

- Own tracksuit
- Own bag
- LJBC PK/K/PP coloured long-sleeved T-shirt or summer T-shirt
- LJBC white sports socks and velcro white (where possible) sports shoes
- College hat

## Kindergarten/Pre Primary Uniform

### Summer

- Navy College sports shorts
- LJBC PK/K/PP coloured T-shirt
- LJBC white sports socks and velcro white sports shoes
- College hat

### Winter

- Navy College tracksuit
- LJBC PK/K/PP coloured long-sleeved T-shirt or summer T-shirt
- LJBC white sports socks and velcro white sports shoes
- College rain jacket if necessary
- College hat



## Girls

## Boys

### Summer Uniform

- blue checked dress
- saxe blue socks (College issue only)
- black lace up shoes (Year 1 and 2 students may wear black school shoes with velcro fasteners)
- saxe blue jumper if weather is cold (not tracksuit top)
- College hat

### Summer Uniform

- elastic back navy shorts
- gold short sleeve button shirt - no tie
- navy socks with light blue and gold stripe
- black lace up shoes (Year 1 and 2 students may wear black school shoes with velcro fasteners)
- saxe blue jumper if weather is cold (not tracksuit top).
- College hat

### Winter Uniform

- checked pinafore
- gold short sleeve shirt (Year 1-6)
- navy tie (looped)
- saxe blue jumper
- saxe blue socks or navy tights (70 denier – available at the Uniform Shop)
- black lace up shoes
- *Optional:* Plain navy rain jacket - water proof (to be worn over the blue jumper for extra warmth and protection in winter if needed) available at the Uniform Shop

### Winter Uniform

- long grey trousers with double knee and elastic back
- gold short sleeve shirt (Year 1-6)
- navy tie (looped)
- saxe blue jumper
- navy socks with light blue and gold stripe
- black lace up shoes
- *Optional:* Plain navy rain jacket - water proof (to be worn over the blue jumper for extra warmth and protection in winter if needed) available at the Uniform Shop

### Sports Uniform

- navy rugby knit sport shorts (to be worn at all Sport and PE activities/ lessons)
- gold/navy polo shirt
- predominantly white sneakers - non-marking soles with any trim in school colours of navy/gold
- white sports socks with navy, gold and blue stripe
- College hat (broad-brimmed)
- navy nylon poly cotton track pants and jacket tracksuits are optional all year

### Sports Uniform

- navy rugby knit sport shorts (to be worn at all Sport and PE activities on allocated days.
- gold/navy polo shirt
- predominantly white sneakers- non-marking soles with any trim in school colours of navy /gold
- white sports socks with navy, gold and blue stripe
- College (broad-brimmed) hat
- navy nylon poly cotton track pants and jacket tracksuits are optional all year

***Only in extenuating circumstances will a student be excused for not being correctly attired and a written parental explanation must be presented to the Dean of Primary.***



## Girls

## Boys

### Summer Uniform

- blue checked dress
- saxe blue socks (College issue only)
- black lace up shoes (Year 1 and 2 students may wear black school shoes with velcro fasteners)
- saxe blue jumper if weather is cold (not tracksuit top)
- College hat

### Summer Uniform

- elastic back navy shorts
- gold short sleeve button shirt - no tie
- navy socks with light blue and gold stripe
- black lace up shoes (Year 1 and 2 students may wear black school shoes with velcro fasteners)
- saxe blue jumper if weather is cold (not tracksuit top).
- College hat

### Winter Uniform

- checked pinafore  
Year 6 girls have an option to wear the Secondary skirt
- gold short sleeve shirt (Year 1-6)
- navy tie
- saxe blue jumper
- saxe blue socks or navy tights (70 denier – available at the Uniform Shop)
- black lace up shoes
- *Optional:* Plain navy rain jacket - water proof (to be worn over the blue jumper for extra warmth and protection in winter if needed) available at the Uniform Shop

### Winter Uniform

- long grey trousers with double knee and elastic back
- Year 6 boys may wear trousers with belt loops, black leather belt with plain silver or gold buckle
- gold short sleeve shirt (Year 1-6)
- navy tie
- saxe blue jumper
- navy socks with light blue and gold stripe
- black lace up shoes
- *Optional:* Plain navy rain jacket - water proof (to be worn over the blue jumper for extra warmth and protection in winter if needed) available at the Uniform Shop

### Sports Uniform

- navy rugby knit sport shorts (to be worn at all sport and PE activities/ lessons)
- gold/navy polo shirt
- predominantly white sneakers - non-marking soles with any trim in school colours of navy/gold
- white sports socks with navy, gold and blue stripe
- College hat (broad-brimmed)
- navy nylon poly cotton track pants and jacket tracksuits are optional all year

### Sports Uniform

- navy rugby knit sport shorts (to be worn at all sport and PE activities on allocated days)  
Optional Year 3-6 students' micro fibre shorts.
- old/navy polo shirt
- predominantly white sneakers- non-marking soles with any trim in school colours of navy/gold
- white sports socks with navy, gold and blue stripe
- College hat (broad-brimmed)
- navy nylon poly cotton track pants and jacket tracksuits are optional all year

**Only in extenuating circumstances will a student be excused for not being correctly attired and a written parental explanation must be presented to the Dean of Primary.**

## Bags

- A College back pack is compulsory
- Bags must be kept in good condition and not covered in graffiti
- Unsatisfactory bags will need to be replaced
- Students should have a completed name tag on their bag

## Shoes

Black, lace-up, polished leather school shoes are compulsory for students at the College. (Year 1 and 2 students may wear black leather shoes with Velcro fasteners). Shoes must be 'heeled' but with heels not higher than 2cm measured from inside of the heel.

### Unacceptable styles include:

- shoes with cleated soles, i.e. soles which have a deep pattern, as these shoes attract dirt etc. which is then carried into the classroom (especially in winter)
- Mary Jane or T-bar styles
- brogues, i.e. shoes that have a punched pattern (upper)
- shoes which cannot be polished
- chunky type shoes or shoes with heavy eyelets, etc.
- shoes with coloured stitching or coloured shoe laces
- black leather sandshoe/sneaker styles

### Current acceptable styles are:

- Clarks Ditto, 24/7, Mega, Decade and Detroit
- Clarks Modesty, and Dude have been discontinued but may be available in some stores. Year 1 and 2: Clarks Velcro Lecture, Alliance or Atlanta
- Comparable brands are available at discount stores.
- Sneakers/sports shoes should be, predominantly white, with minimal trim, in school colours of navy or gold. A non-marking sole is required. Sports shoes should be of a sufficient support level for playing sport, rather than purely fashionable.

Orthotics: Clarks Detroit are also designed for orthotics therefore boots are not an acceptable alternative unless recommended for AFO's or other specific disabilities.



## Art Shirts

In order to protect clothing during Art lessons it is necessary for the children to wear vinyl art shirts. These should be clearly labelled and will be stored in classrooms. Art shirts are listed on the Class Booklists.

## Jewellery

One small plain gold or silver stud or small sleeper, that rotates through the earlobe, in the lower earlobe only and a watch are the only jewellery that is permissible. Studs with large stones are not permitted.

Students who choose to wear other jewellery risk its confiscation (regardless of financial or sentimental value) with the item being returned only to a parent/guardian or at the end of the School term.

In cases of jewellery that needs to be worn for religious or cultural reasons, parents of such students should meet with the Dean of Primary to discuss upon enrolment.

Please note: it is not acceptable for students who choose to have extra piercing done during the school year to be allowed additional earrings during the period of 'not removing' them, to avoid the piercing closing.

## Bathers

Navy bathers are required. Modesty is required when wearing bathers at any College activity. Two-piece, but not bikinis, will be acceptable. Students in the swim club and Swim Squad (Primswim) are able to purchase bathers through the Uniform Shop.





## Hair

1. Must be short or tied back if length is below the collar.
2. Hair bands/scrunchies of a plain navy, light blue or gold colour may be worn. Please note: decorative wiglets, clips, flowers, combs or glitter may not be worn.
3. Hair must be held in place so that it does not fall in front of the face.

**Moderate hair products and styles (a number three haircut for boys) are acceptable. Only tints that are a natural colour may be used. Excessive colour is not acceptable.**

4. Braids/small plaits are acceptable provided that:
  - they fit the head firmly and neatly and are tied back into a pony tail which is secured at the nape of the neck (i.e. not on the top of or back of the head) and also at the base of the pony tail
  - they are kept neat, clean and well groomed
  - no beads or coloured bands are used
  - no undercuts or novelty shaved areas

All hair styles, for College wear, must be moderate and sensible - fashion statements or extreme hairstyles will not be accepted. If in doubt, check with the Primary Student Engagement Leader or the Dean of Primary. Students with inappropriate hairstyles will be removed from class and parents asked to collect the student and rectify the hairstyle as soon as possible.

Due to continuing head lice problems in schools, parents/guardians are asked to be vigilant in checking children's hair.

## Personal Presentation

Make-up is not acceptable (i.e. nail polish, lipstick, eye liner, mascara, coloured or fluoro lip gloss etc.) although a light cover may be applied to disguise skin blemishes. Clear, non-perfumed lip balm containing SPF 30 is acceptable.

Students will be asked to remove make-up if it is worn in Primary School and parents notified.

## Hats

Due to increasing awareness about the harmful effects of the sun, it is important to educate children about the value of protection from the sun. All children are asked to wear their school hat for outside activities. Children not wearing hats are asked to play in shaded areas. Children are encouraged to wear hats throughout the year and should have them available at all times.

## Lost Items

Missing items should be reported immediately to the Class Teacher, however the college takes no responsibility for lost or damaged items. We recommend that everything brought to school is labelled.

Lost items found by a student must be handed to the Primary Reception as soon as possible. Labelled items will be returned to the student.

***Please ensure all items of clothing are clearly labelled.***



## Uniform Standards

In addition to wearing the appropriate items of clothing and conforming to all of the requirements for makeup, hair and grooming, students are expected to keep their uniform in good condition and wear it properly.

All students should comply with the following:

- The shirt should be tucked in fully
- The top button of the shirt must be done up comfortably when wearing a tie
- The tie should be neatly tied and pulled up so that it covers the top button
- The tie should be a reasonable length
- Shoes should be clean and polished
- Girls' summer/sports socks should be clearly visible, not tucked under heels

## Uniform Practice

Winter uniform is considered the 'formal' uniform and is expected to be worn for public performances by students or to official functions.

For all excursions, summer or winter uniform (not sport uniform), depending on the time of year, will be worn, unless alternative dress is approved or required for a specific activity by the Dean of Primary. Students may be excluded from participating in the excursion, sport activity, etc. if they are not in the appropriate uniform.

On all formal occasions, the Primary School jumper will be worn by students in Years 1 to 6. These occasions include, but are not limited to:

- College photographs
- Primary Arts Festival, music productions and Eisteddfods
- Choral and orchestral performances
- Primary School representation at events

The wearing of the Primary School jumper may be requested on other occasions at the discretion of the Dean of Primary.

It is a requirement for enrolment that parents/guardians and students support the ethos, standards of conduct and dress expected by the College, and that policies are supported by compliance.



phone +61 8 9300 7444 | [ljbc@ljbc.wa.edu.au](mailto:ljbc@ljbc.wa.edu.au) | [www.ljbc.wa.edu.au](http://www.ljbc.wa.edu.au)